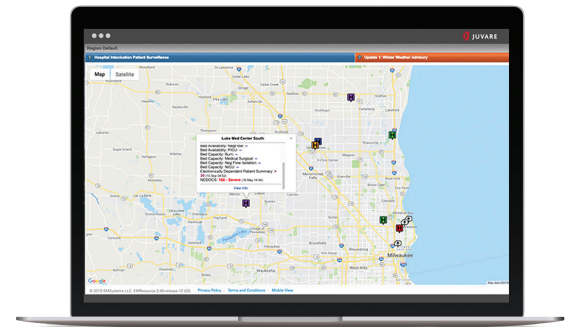




Healthcare and Emergency Resource Management

EMResource is a powerful communication and resource management solution that equips healthcare entities, emergency responders, and public health stakeholders with practical and holistic operational views. Customized views allow for local, regional and enterprise wide resources, ranging from bed and ventilator counts to facility status, from trailer caches to helicopters, and from infectious patient counts to PPE shortages to be quickly assessed. When tragedies occur, healthcare facilities, EMS agencies, and government entities rely on EMResource for situational awareness.

EMResource offers the tools needed to monitor and query current asset statuses and bed availability, in addition to alerting and engaging constituents, partners, and coalition members in both daily and response operations. Combined with its robust API, which enables hospitals to automate data submissions that further enhances situational awareness, key response personnel are able to focus on saving lives while we handle the data collection.



Industry Highlights

Hospitals & EDs

Hospitals and Emergency Departments (ED) use EMResource to calculate and display their current level of patient saturation.

- + Calculate ED overcrowding scores
- + Drive internal processes such as staffing levels
- + Patient destination decision support
- + Assess individual facility capacity and overall regional stress level of area hospitals

Public Health

Agencies can collect hospital-level data to support and manage patient surge situations, such as those that may occur during flu season.

- + Determine volume of patients with symptoms
- + Assess whether to expand care areas
- + Identify supply needs such as medications, IV fluids, ventilators, and other equipment
- + Implement alternate processes or care areas

Dispatch Centers & EMS

Dispatch Centers and EMS use EMResource to manage MCI response, asking hospitals to report on bed and service availability.

- + Identify bed availability for specific situations such as stroke, STEMI, trauma, or burn
- + Communicate decontamination capacity
- + Track specialty care capabilities, especially in rural and critical access settings

Provider Focused

EMResource can track any healthcare asset in your hospital, region, coalition, or health system. The solution supports each participant with a customizable profile focused on their key performance indicators, coalition contributions, and operational statuses. The all-hazards approach supports:

- + ESRD networks
- + Home health agencies
- + Hospice providers
- + Dialysis services
- + Critical access
- + Mental health resources
- + Long-term care
- + Clinics
- + Pharmacies
- + Outpatient and rehab
- + Surgical centers
- + Organ and transplant networks

